



OAKFIELD

Cavendish Place, Eastbourne, BN21 3JB

£825 Per Calendar Month



Cavendish Place, Eastbourne, BN21 3JB

This lovely second floor one bedroom flat is located in the heart of the town centre! It has been recently improved throughout.

Comprising a spacious living area with feature bay window and fireplace, opening out to the modern, stylish kitchen with oven hob and fridge freezer included, good size double bedroom and main bathroom fitted with a standard, functional three piece suite to include shower over bath!

Located close to all main transport links and amenities, this property would be great for commuters or anyone seeking convenient living.

Please note:

An annual household income of £24,750 is required to pass affordability checks

The tenancy will begin with a 12 month initial term





Living Room
18'4 x 12'2 (5.59m x 3.71m)

Kitchen
7'9 x 7'0 (2.36m x 2.13m)

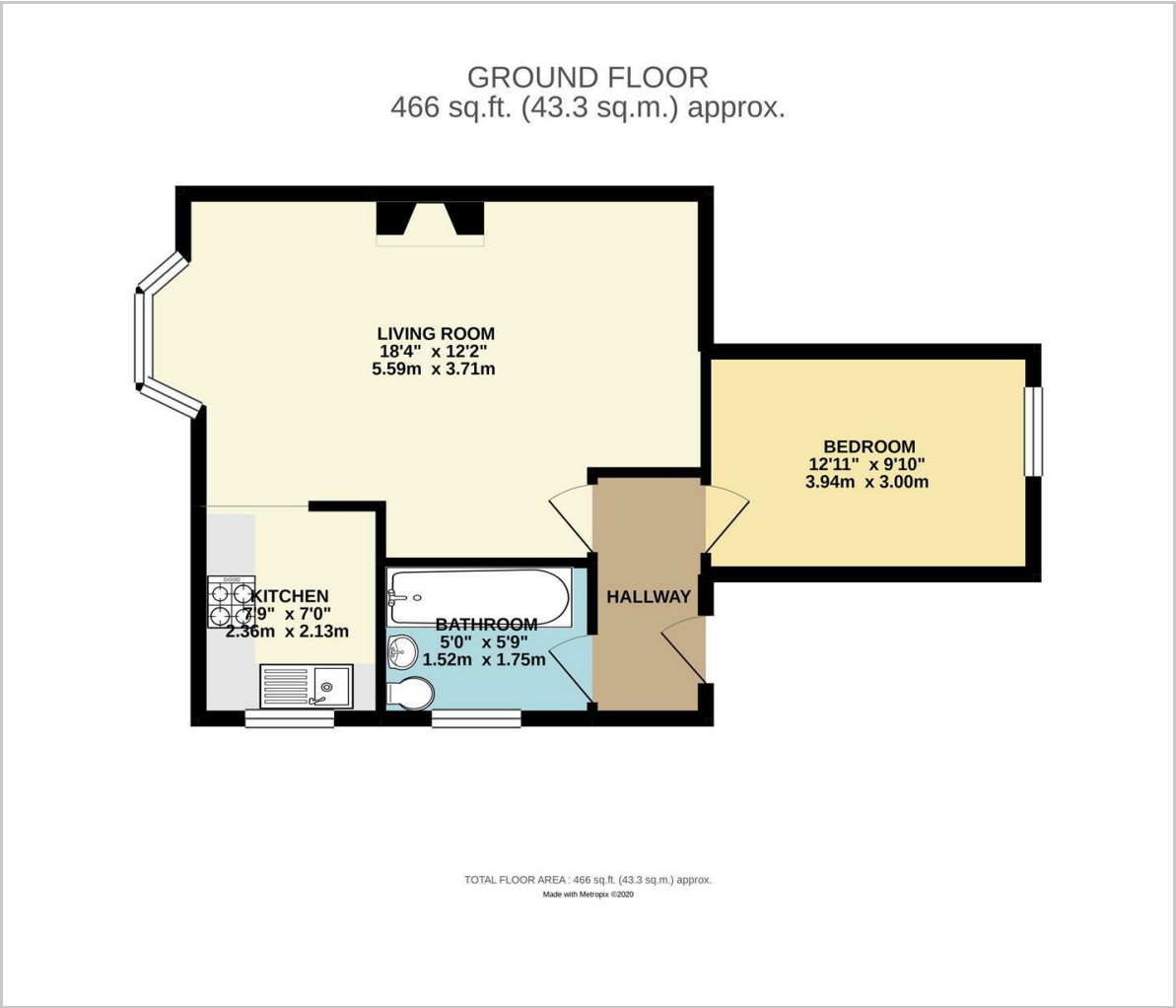
Bedroom
12'11 x 9'10 (3.94m x 3.00m)

Bathroom
5'9 x 5'0 (1.75m x 1.52m)

Council Tax Band A £1,688 per annum



Floor Plan



Viewing

Please contact us on 01323 405553
if you wish to arrange a viewing appointment for this property or require further information.

These particulars, whilst believed to be accurate are set out as a general outline only for guidance and do not constitute any part of an offer or contract. Intending purchasers should not rely on them as statements of representation of fact, but must satisfy themselves by inspection or otherwise as to their accuracy. No person in this firms employment has the authority to make or give any representation or warranty in respect of the property.

Area Map



Energy Efficiency Graph

